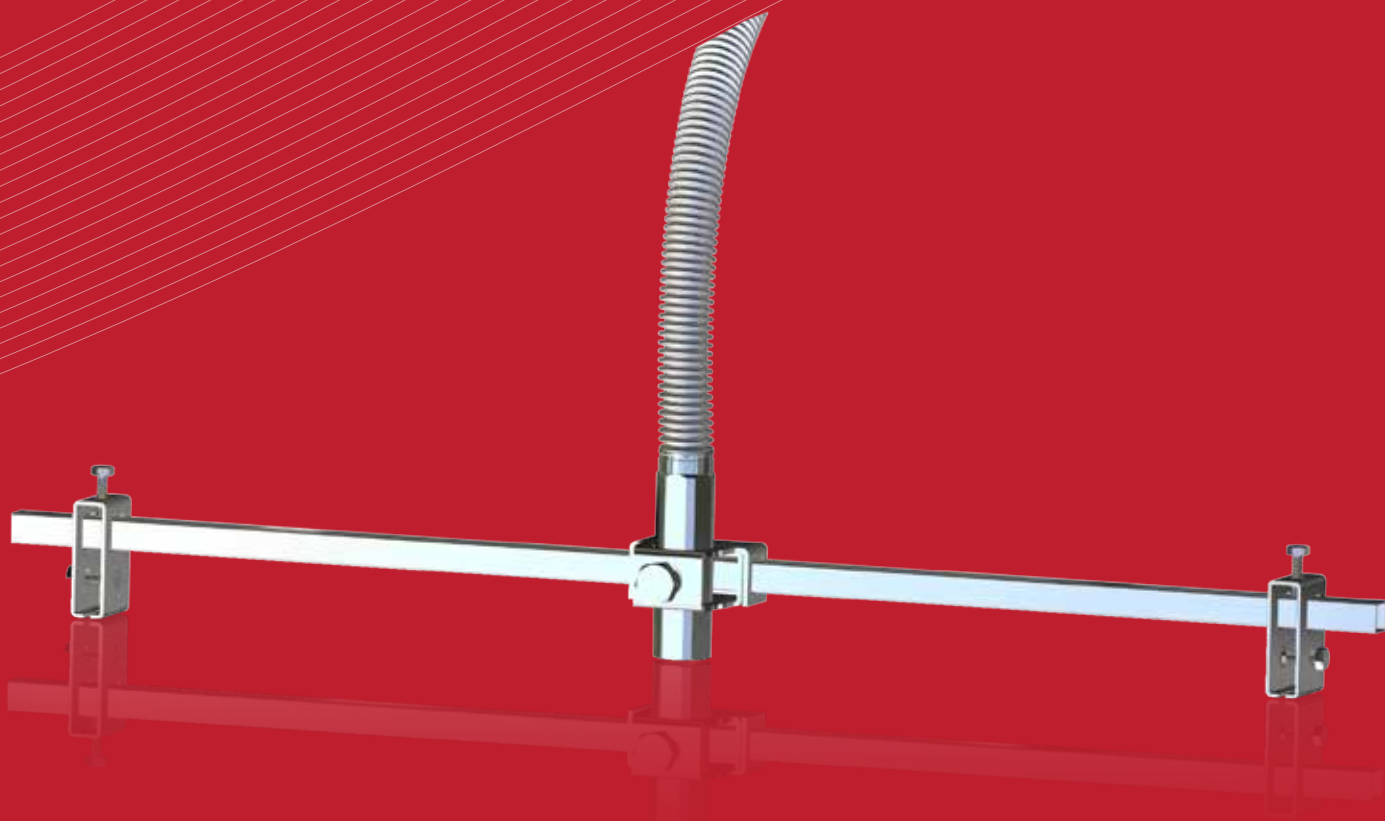


»»»[®] ARSEN

SPRINKLER HOSE WITHOUT BRAIDING AND CONNECTION ADAPTER



CONTENTS

CONTENTS	2
GENERAL EXPLANATIONS	3
GENERAL SPECIFICATIONS	4
<i>Dimensions and Operating Conditions</i>	
<i>Material Specifications</i>	
<i>Friction Losses and Specifications (UL Listed)</i>	
PRODUCT SPECIFICATIONS	5
<i>Kit Introduction</i>	
<i>Ceiling Specifications</i>	
<i>System Specifications</i>	
<i>Safety Of Sprinkler Under Seismic Motions</i>	
TECHNICAL DRAWINGS	6
<i>Kit Fixing Apparatus (Lay-in)</i>	
<i>Kit Fixing Apparatus (Clip-in)</i>	
<i>Hose Fixing Apparatus</i>	
<i>Kit Suspension Profile</i>	
TECHNICAL DRAWINGS	7
<i>DN20 Hose Technical Drawing</i>	
<i>DN25 Technical Drawing</i>	
NFPA 13 2007 EDITION	8
SOME TESTS PERFORMED AND CAUTION FOR INSTALLATION INSTRUCTIONS	9
<i>Underwriters Laboratories (UL) Tarafından Yapılan Bazı Testler</i>	
<i>Caution For Installation Instructions</i>	
INSTALLATION INSTRUCTIONS	10
<i>Drawing - I and Explanations</i>	
<i>Drawing - II and Explanations</i>	
<i>Drawing - III and Explanations</i>	
INSTALLATION INSTRUCTIONS	11
<i>Drawing - IV and Explanations</i>	
<i>Drawing - V and Explanations</i>	
<i>Drawing - VI and Explanations</i>	
INSTALLATION INSTRUCTIONS	12
<i>Drawing - VII and Explanations</i>	
<i>Drawing - VIII and Explanations</i>	
<i>Drawing - IX and Explanations</i>	
CORRECT - INCORRECT INSTALLATIONS	13

GENERAL EXPLANATIONS

ARSEN-USP sprinkler hose without braiding ve connection adapter is produced using unbraided hose reinforced against pressure and can be safely used in fire extinguishing systems due to its structure not being affected by seismic motions.

Primary advantages are connecting the sprinkler to the fire line with minimum effort and installing the device easily into ceiling with its connection kit.

Public places like shopping centers, hotels, theaters, cinemas where the response time is really important are where the system is mostly chosen.

There are many advantages using Arsen-USP Sprinkler Hose and Connection Adapter to mount sprinkler systems.

Most important ones are minimum workmanship time provided by easy installation, safer sprinkler systems against seismic motions and adjustability without being dependent upon design of installation lines.



Proficiency and time is needed for adjusting the steel installation line to the desired sprinkler mounting point using elbows, couplings etc.

By using Arsen-USP Sprinkler Adapter, it is quite easy to align and tighten sprink side of sprinkler hose with desired point (usually middle point of grid) of ceilings.

Additionally, due to convenient design of hose fixing apparatus, sprink side of hose can be adjusted on vertical axis.

As a result, height of sprinkler head and escutcheon can be adjusted relative to ceilings.

International approvals (UL,FM) for hoses used in sprinkler systems show that needed tests like pressure, temperature, fatigue, vibration etc. are conducted by approving authority, hoses comply technical specification declared and checked in certain time periods whether they are produced according to approved specifications.

GENERAL SPECIFICATIONS

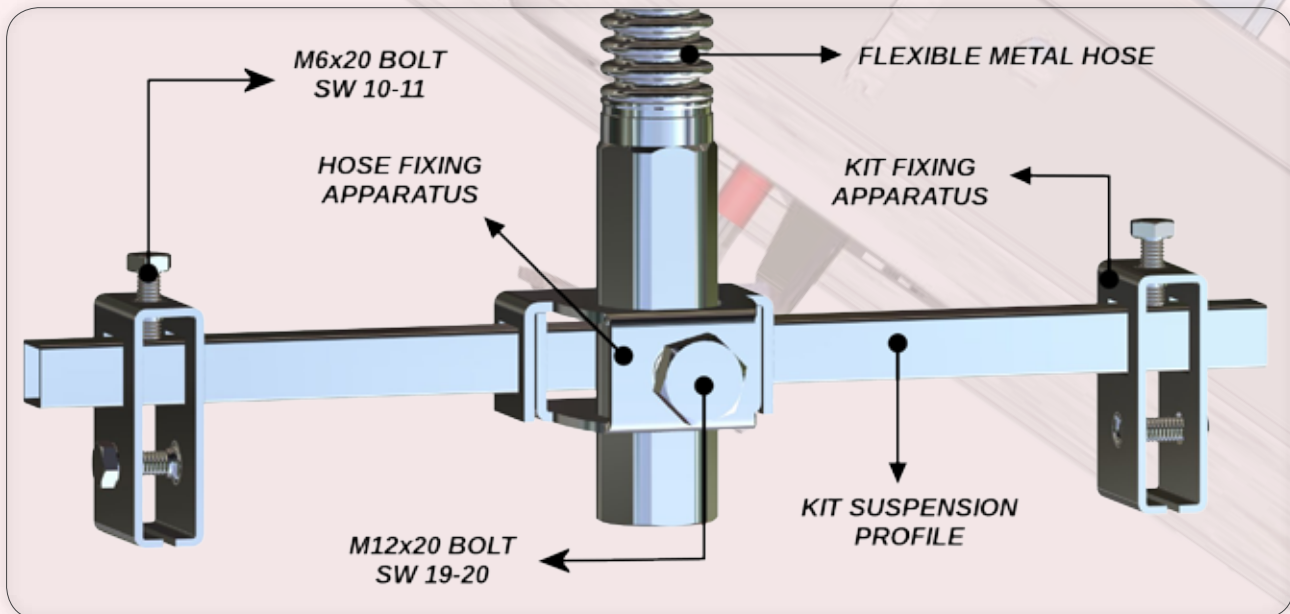
<i>Dimensions and Operating Conditions</i>		
Hose Diameter	DN 20 - 3/4"	DN 25 - 1"
Connection Diameter	Nipple Side 1" / Sprink Side 1/2"	
Standard Length	600 - 900 - 1200 - 1500 - 1800 mm	
Operating Pressure	16 bar / 230 psi	12 bar / 175 psi
Ambient Temperature Rating	149 °C / 300 °F	
Minimum Bending Radius	170 mm	190 mm
Largest K-Factor	8.0 GPM/psi ^{1/2}	
Wet – Dry Systems	Both	
Connection to Fire Sprinkler	Direkt	

<i>Material Specifications</i>	
Hose	AISI 316L Stainless Steel
Connections	Carbon Steel (Standard) / Stainless Steel (Optional)
Connection Adapter	Carbon Steel (Zinc Coated)

<i>Friction Losses and Specifications (UL Listed)</i>						
Model No	Hose Length	Input Diameter	Output Diameter	Max. No of 90° Bends	Equivalent Length of 1" Sch 40 Pipe	Maximum Pressure
A-USP600-20	0.6m 2ft	1 inch	1/2 inch	2	40	16 bar/230 psi
A-USP900-20	0.9m 3ft	1 inch	1/2 inch	3	60	16 bar/230 psi
A-USP1200-20	1.2m 4ft	1 inch	1/2 inch	3	71	16 bar/230 psi
A-USP1500-20	1.5m 5ft	1 inch	1/2 inch	3	87	16 bar/230 psi
A-USP1800-20	1.8m 6ft	1 inch	1/2 inch	3	107	16 bar/230 psi

PRODUCT SPECIFICATIONS

Kit Introduction



Sprinkler connection adapter is designed against problems during mounting of sprinkler nozzles. They are delivered with bolts attached in order to obtain easiest and fastest mounting to ceiling systems specified below.

Ceiling Specifications

These connections are designed for use in ceilings with grids that meet ASTM C 635 (Standard Specification for the Manufacture, Performance, and Testing of Metal Suspension Systems for Acoustical Tile and Lay-in Panel Ceilings) and ASTM C 636 (Standard Practice for Installation of Metal Ceiling Suspension Systems for Acoustical Tile and Lay-in Panels) referenced by the IBC. The three structural classifications are the following: Light-Duty Systems, Intermediate-Duty Systems and Heavy-Duty Systems. These connections have been approved for use in all Intermediate-Duty and Heavy-Duty structural classifications.

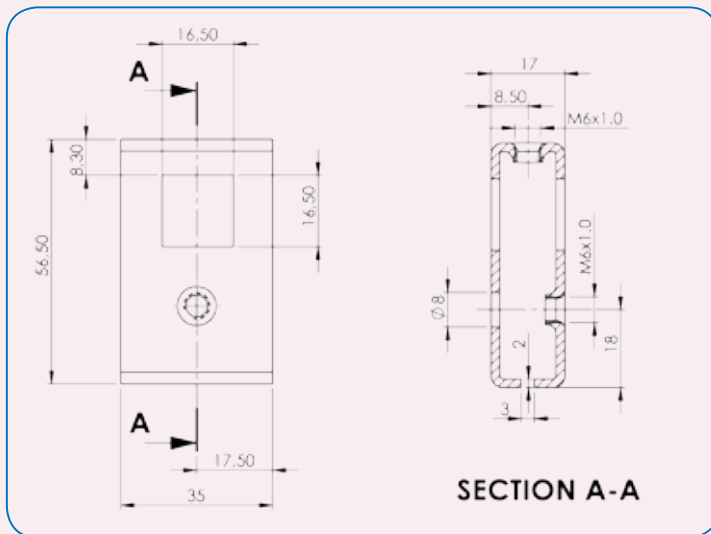
System Specifications

Arsen SP products are intended for use in hydraulically designed wet or dry pipe sprinkler connections per NFPA 13, 13R, and 13D guidelines and for direct connection to fire sprinklers.

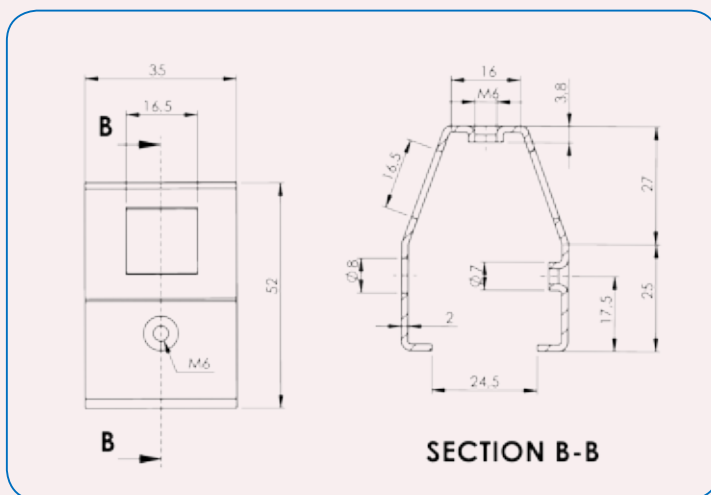
Safety Of Sprinkler Under Seismic Motions

It is quite important that safety systems are able to work free of problems. ARSEN-SP Flexible Sprinkler Hose Connection reduces the probability of degradation caused by seismic motions.

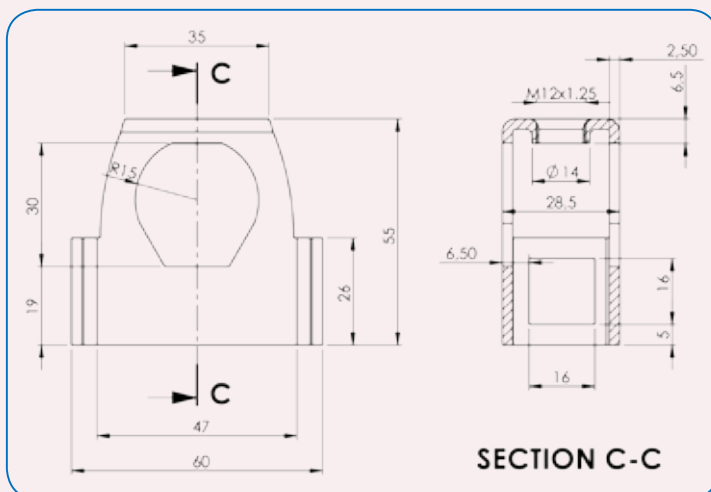
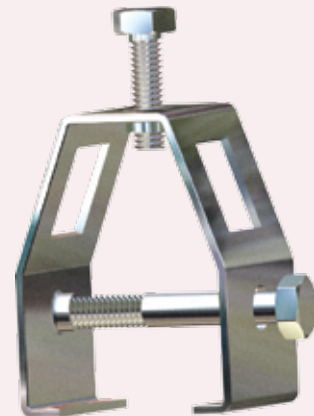
TECHNICAL DRAWINGS



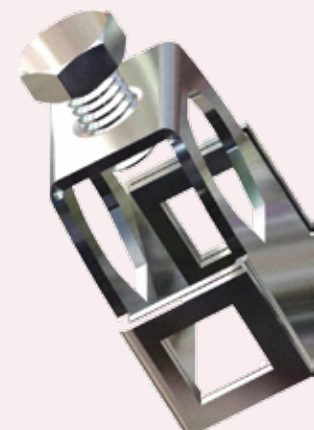
Kit Fixing Apparatus (Lay-in)



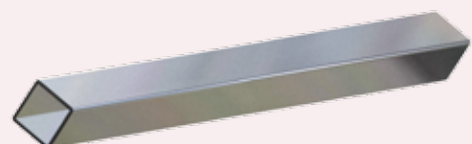
Kit Fixing Apparatus (Clip-in)



Hose Fixing Apparatus

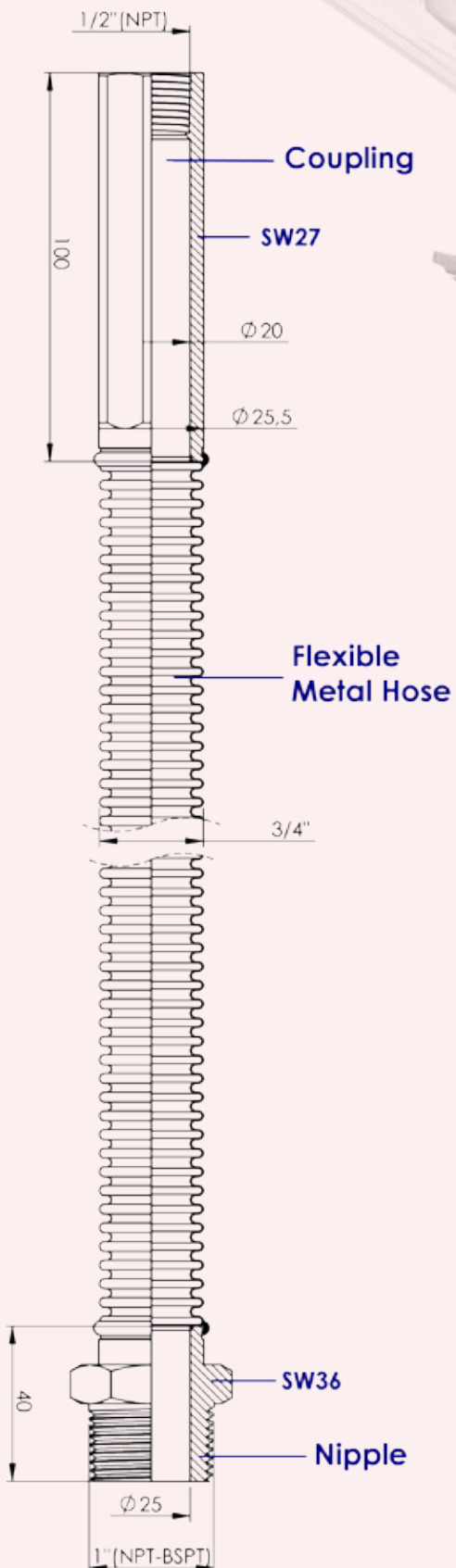


Kit Suspension Profile

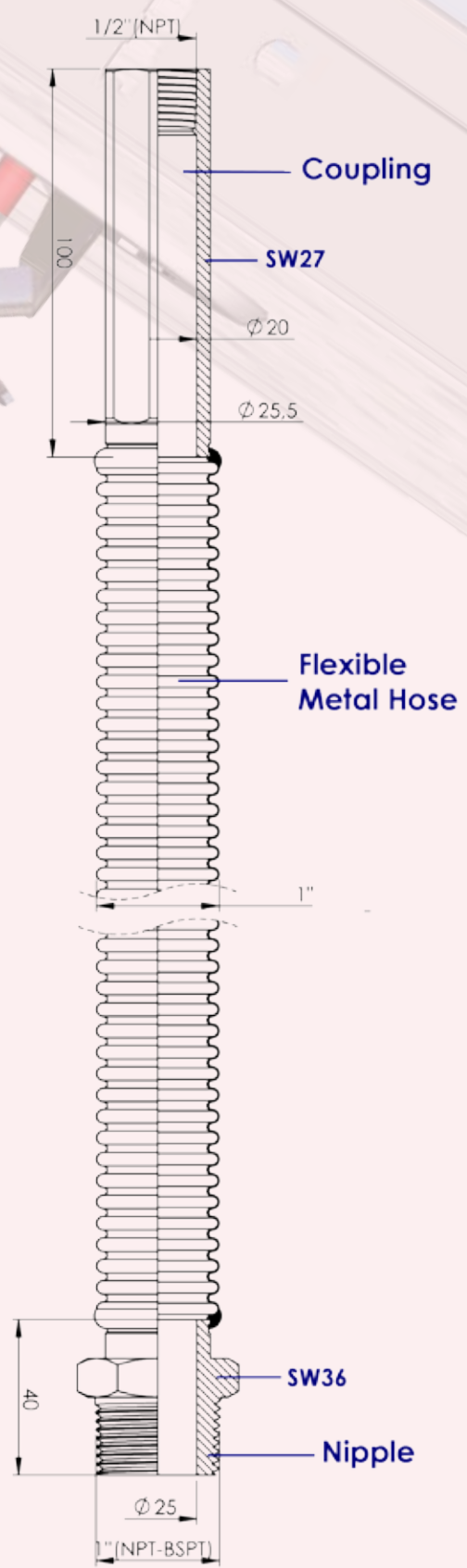


TECHNICAL DRAWINGS

DN20 Hose Technical Drawing



DN25 Technical Drawing



NFPA 13 2007 EDITION

- 9.2.1.3.3* Flexible Sprinkler Hose Fittings.
- A. 9.2.1.3.3 Examples of areas of use include clean rooms, suspended ceilings, and exhaust ducts.
- 9.2.1.3.3.1 Listed flexible sprinkler hose fittings and its anchoring components, intended for use in installations connecting the sprinkler piping to sprinklers, shall be installed in accordance with the requirements of the listing including any installation instructions.
- 9.2.1.3.3.2 When installed and supported by suspended ceilings, the ceiling shall meet ASTM C-635 and shall be installed in accordance with ASTM C-636.
- 9.2.1.3.3.3* When flexible sprinkler hose fittings exceed 6 ft in length and are supported by a suspended ceiling a hanger(s) attached to the structure shall be required to ensure that the maximum unsupported length does not exceed 6ft.
- A. 9.2.1.3.3.3 The committee evaluation of flexible sprinkler hose fittings supported by suspended ceilings was based upon a comparison of the weight of a 6 ft., 1 in diameter sch 40 water-filled flexible hose fitting weighing approximately 9 lbs. The information provided to the committee showed that maximum load shed to the suspended ceiling by the flexible hose fitting was approximately 6 lbs. and that suspended ceiling meeting ASTM C-635, Standard Specification for the Manufacture, Performance, and Testing of Metal Suspension of Acoustical Tile and Lay-In Panel Ceiling, and installed in accordance with ASTM C-636, Standard Practice for Installation of Metal Ceiling Suspension Systems for Acoustical Tile and Lay-In Panels, can substantially support the load. In addition, the supporting material showed that the flexible hose connection can be attached to the suspended ceilings because it allows the necessary deflections under seismic conditions.

SOME TESTS PERFORMED AND CAUTION FOR INSTALLATION INSTRUCTIONS

Underwriters Laboratories (UL) Tarafından Yapılan Bazı Testler

1. Hydrostatic Pressure and Leakage Test
2. Mechanical Strength Test
3. High Temperature Exposure Test
4. Vibration Test
5. Equivalent Length Determination
6. Stress-Corrosion Cracking of Stainless Steel Parts Test
7. Elastomeric Parts Test
8. Low Temperature Test for Dry Pipe Systems
9. Pressure Cycling Test
10. Vacuum Test
11. High Pressure Flow Test
12. Fatigue Test
13. Metallic Coating Thickness Test

Caution For Installation Instructions

Installation instructions below are only for qualified and/or licensed technicians in the Fire Protection field. Consult NFPA and local code guidelines prior to installation.

Failure to follow these instructions may cause personal injury. Installation technicians must read the entire manual prior to attempting installation of this product.

During maintenance or inspection of Arsen-Sp product, facility fire protection system should be deactivated.

Do not attempt any process when the system is active. All M6 bolts within the set should be tightened with a 2 pound-foot (2.7 N.m) torque and M12 bolt with a 5 pound-foot (6.8 N.m) torque.

INSTALLATION INSTRUCTIONS

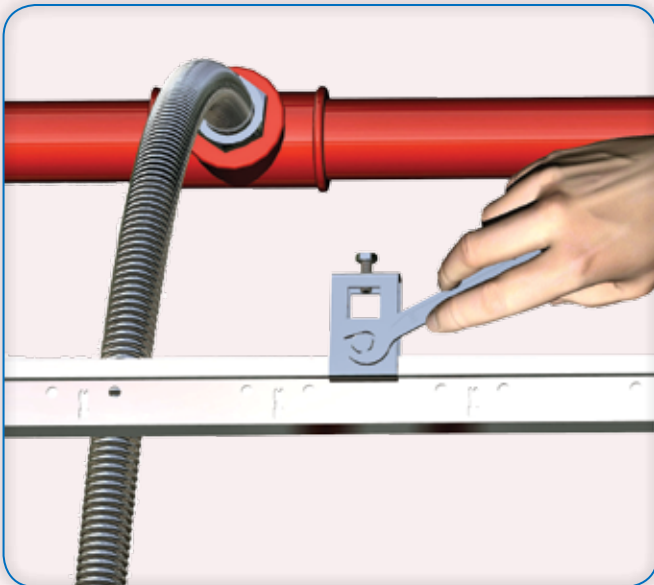


Drawing - I and Explanations

The hose is attached and tightened to the mechanical-t, tee or welded coupling on the fire line by a SW-36 wrench.

On this process, because the thread of nut is conical (NPT, BSPT), no gasket is required.

You may need to consult NFPA guidelines for using Teflon tape or pipe sealant during this process.

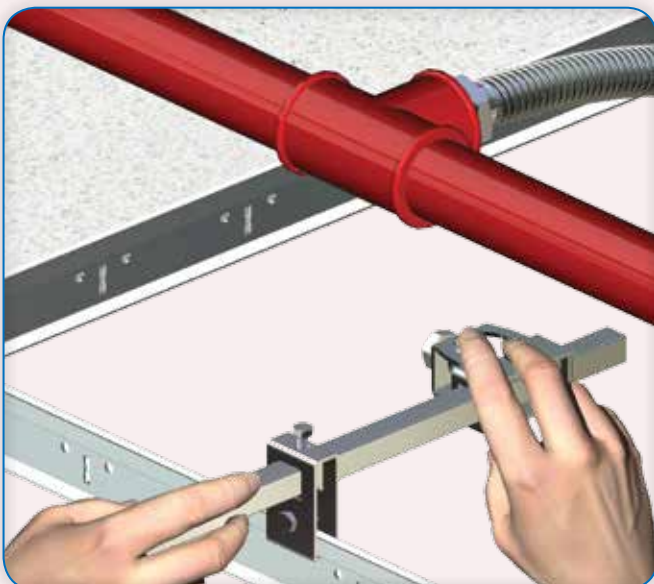


Drawing - II and Explanations

The right and left fixing apparatuses are attached to the approximate middle of metal grid by rule of thumb and tightened using a SW-10 wrench not to be fully tight.

It is recommended not to complete tightening because further fine tuning may be required.

At this phase, the bolts upper parts of the fixing apparatuses are not to be tightened.

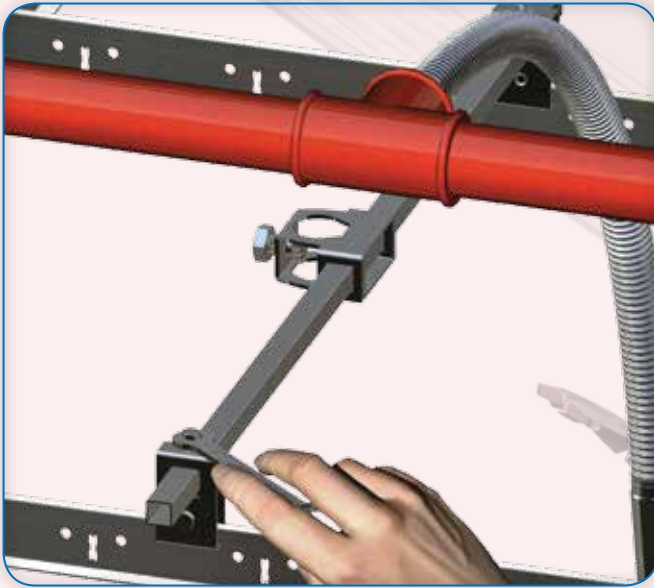


Drawing - III and Explanations

After putting the profile through right or left fixing apparatus, continue pushing the profile to the opposite direction at the same plane.

Continue pushing until profile passes through hose fixing apparatus and the opposite kit fixing apparatus and profile has equal lengths stuck at both sides.

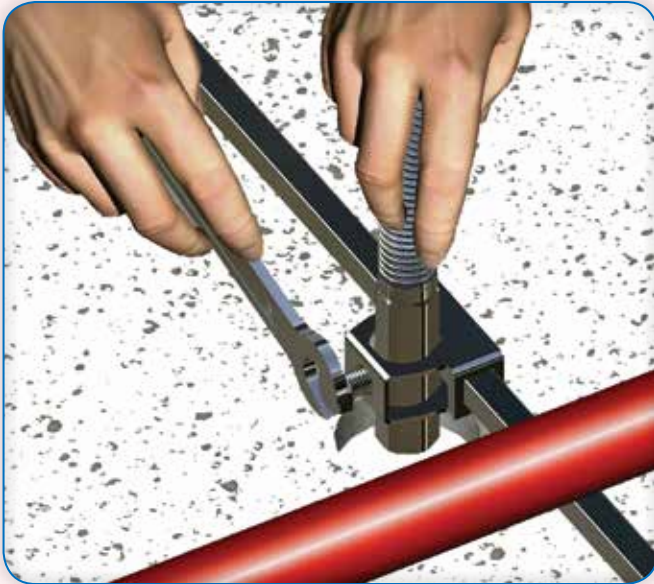
INSTALLATION INSTRUCTIONS



Drawing - IV and Explanations

The upper bolts of right and left kit apparatuses are tightened using a SW-10 wrench.

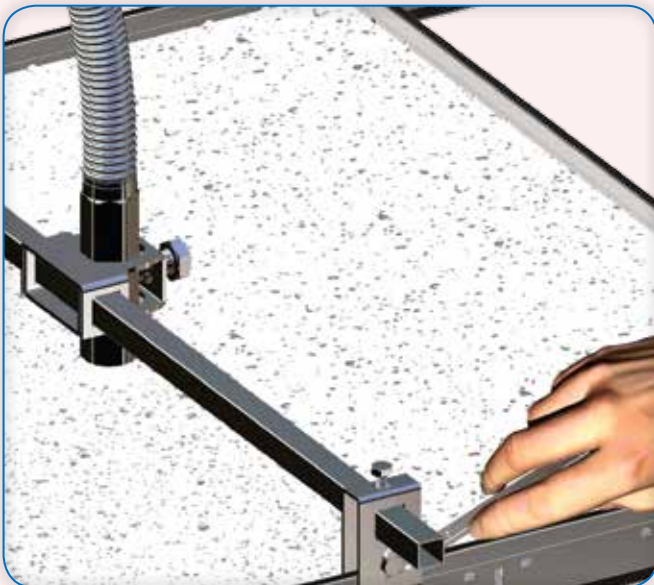
It is recommended to do this by a torque-limited wrench at 2 pound-foot (2.7 N.m) torque.



Drawing - V and Explanations

Sprink side of the sprinkler hose is placed in the hose fixing apparatus, and apparatus is adjusted to be aligned with the hole on ceiling.

The bolt of the apparatus is tightened using SW-19 wrench. It is recommended to do this by a torque-limited wrench at 5 pound-foot (6.8 N.m) torque.



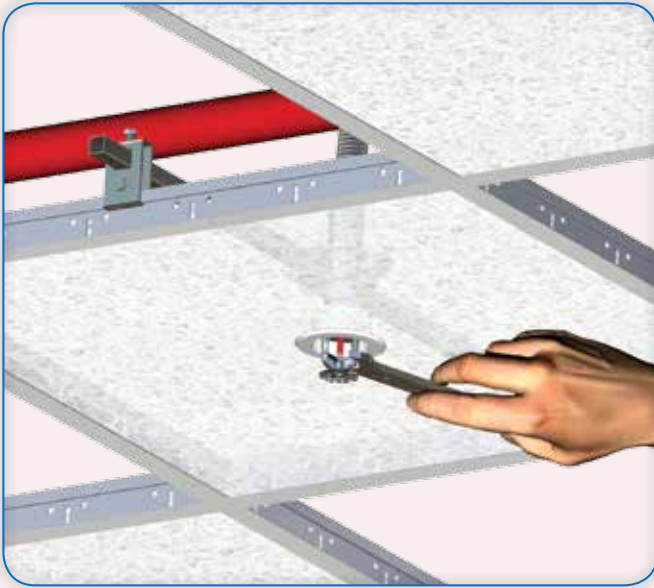
Drawing - VI and Explanations

The whole set is aligned so that the sprink side of hose is aligned with the hole on ceiling.

The bottom bolts of right and left kit fixing apparatuses are tightened using a SW-10 wrench.

It is recommended to do this by a torque-limited wrench at 2 pound-foot (2.7 N.m) torque.

INSTALLATION INSTRUCTIONS

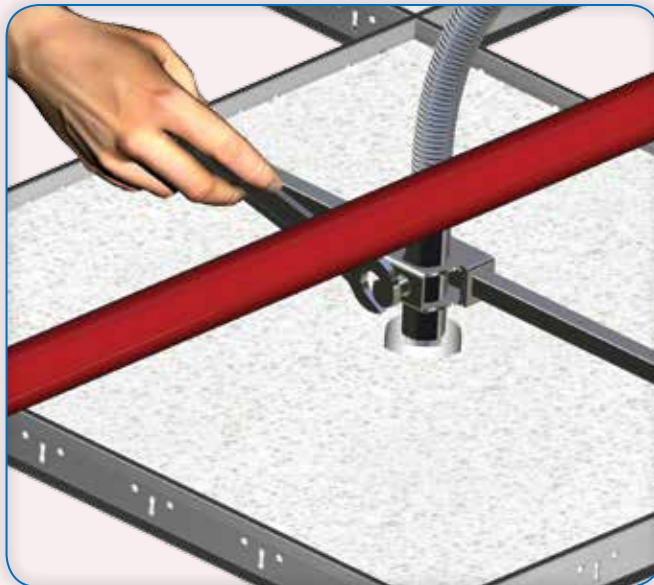


Drawing - VII and Explanations

The sprinkler head and escutcheon are tightened to sprink end of hose according to NFPA and sprinkler head manufacturer's guidelines.

Thread type of sprinkler head and hose is conical (NPT), so, no gasket is required.

You may need to consult NFPA guidelines for using Teflon tape or pipe sealant during this process.

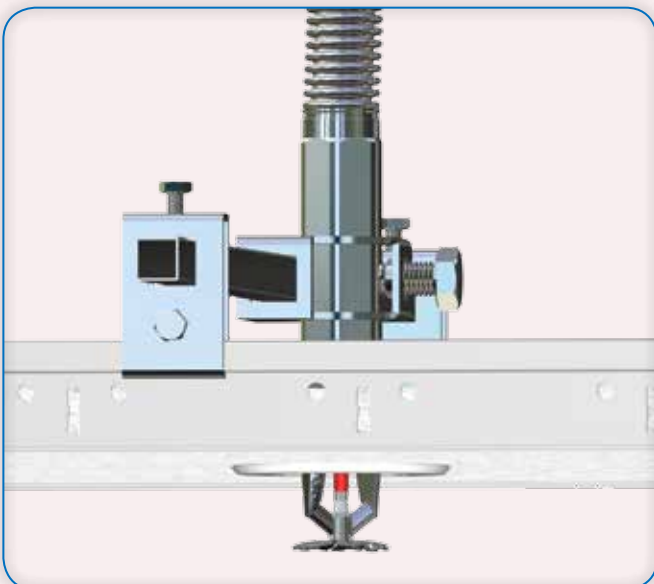


Drawing - VIII and Explanations

Loose the bolt on the hose fixing apparatus and adjust the level of sprink side of sprinkler hose relative to ceiling structure as desired.

Finally tighten the bolt using a SW-19 wrench.

It is recommended to do this by a torque-limited wrench at 5 pound-foot (6.8 N.m) torque.



Drawing - IX and Explanations

Test the installation of sprinkler system against leaks per NFPA. Finally, sprinkler hose and connection adapter is ready to help protecting living beings and structures against the risk of fire.

Resistance of our product against pressure, temperature, vibration and corrosion is tested in UL Laboratories, USA.

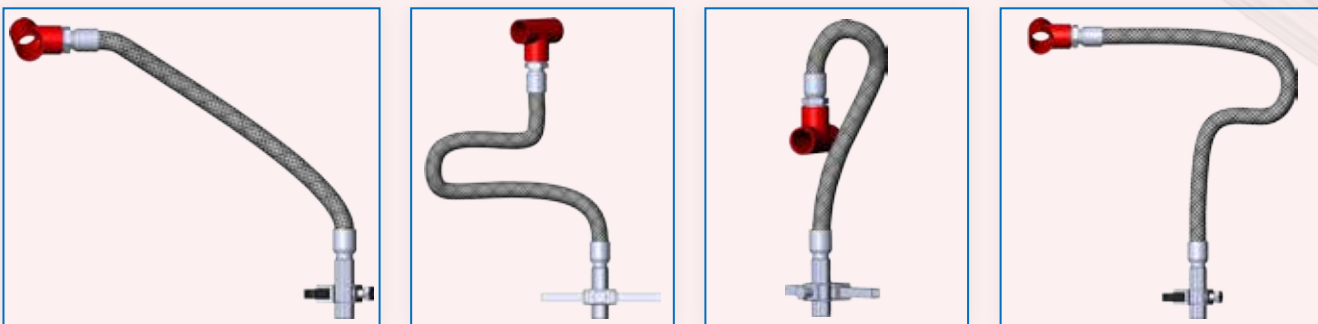
CORRECT - INCORRECT INSTALLATIONS

You can find some incorrect connection types and related corrections on several drawings below. Installing the hose to the fire line according to the minimum bend radius restrictions extends the cycle life.

Some Correct Installation Types



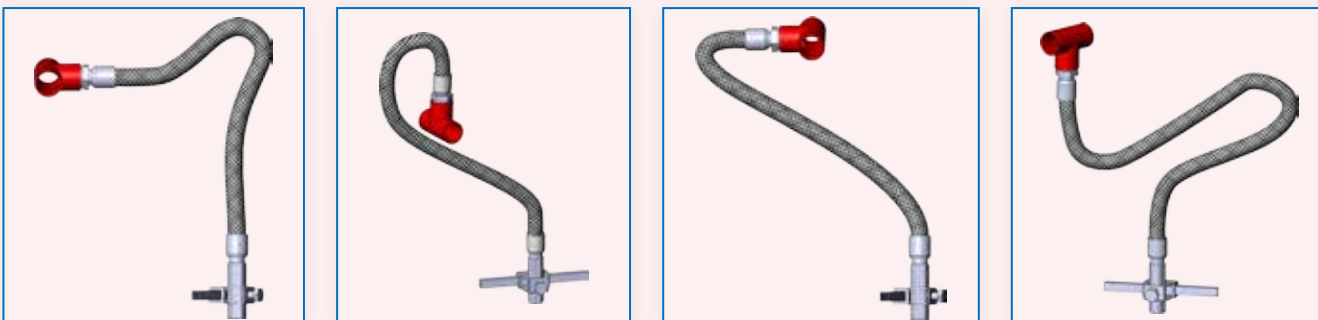
Some Incorrect Installation Types



Some Correct Installation Types



Some Incorrect Installation Types



**Arsen Industrial Installation
Products Ltd.Co.**

Address : Merkez Mah. Emirler Sok. No:25
34245 Gaziosmanpasa/Istanbul-Turkiye
Tel : +90 212 564 90 40 Fax :+90 212 564 90 88
Web : www.arsen.com.tr
Email : arsen@arsen.com.tr



“QUALITY ALWAYS WINS”

ARSENFLEX®